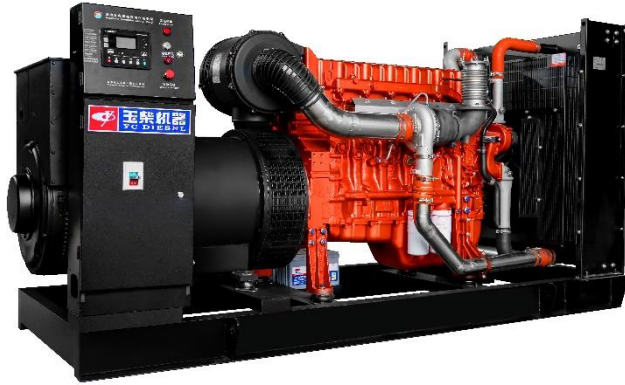




## 帕特玉柴系列柴油发电机组

### PAT-TECH YUCHAI SERIES DIESEL ENGINE GENERATOR



PY400P

#### 发电机组额定容量 RATINGS AND PERFORMANCE DATA

型号 Model		PY400P / PY440S						
频率 Frequency Hz	电压 Voltages V	额定转速 Rated Speed RPM	功率因数 Power Factor Cos Φ	相数 PH	主用 Prime Rating		备用 Standby Rating	
					kVA	kW	kVA	kW
50	400/231	1500	0.8 滞后 lagged	3	500	400	550	440

60Hz 及其它电压等级机组请与工厂联系

Consult factory for 60Hz and other voltages.

#### 定义 DEFINITIONS

##### 主用功率 Prime Rating

主用功率适于连续地对变化负载提供电力输出，没有年度运行时间限制。主用功率可在 12 小时内提供 1 小时 10% 过载运行。

There ratings are applicable for supplying continuous electrical power at variable load. There is no limitation to the annual hours of operation and this model can supply 10% overload power for 1 hour in 12 hours.

##### 备用功率 Standby Rating

备用功率适于在市电故障时对变化负载提供连续电力输出，年度运行低于 500 小时。备用功率机组没有过载能力。

There ratings are applicable for supplying continuous electrical power at variable load in the event of a mains power failure. 500 hours limited for 1 year and no overload is permitted on these ratings.

##### 标准工况 Standard Reference Conditions

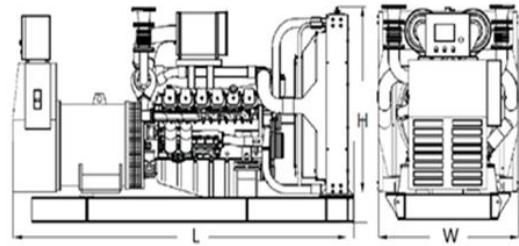
标准工况 25℃ 环境温度，100m 海拔，30% 的相对湿度下测试。

Standard reference conditions 25℃ Air Inlet Temp., 100m A.S.L., 30% relative humidity.



## 主要特点 Main Features

- 帕特公司提供所供产品全部直接品质保证  
PAT-TECH provides one-source responsibility for the generators and accessories
- 电气性能满足 ISO 8528-5 性能标准  
Transient performance meets ISO 8528-5
- 高品质、可靠的功率输出  
High quality and reliability power output
- 结构简单，功率损耗小，故障率低  
Simple structured, lower power loss, lower fault
- 允许在较宽的温度范围内工作而不需修正  
Able to be operating under wide ambient conditions without de-rating output
- 独立的燃油直接喷油系统保证最佳燃油雾化并快速经济有效地燃烧  
Independent fuel fire system to ensure best fuel atomization and economic combustion
- 易启动，保持紧急备用  
Easy startup and suitable for emergency application
- 多种控制器可供项目选用  
Controllers are available to meet all applications



## 尺寸和重量 DIMENSION AND WEIGHT

长 Length (L)	mm	3250
宽 Width (W)	mm	1265
高 Height (H)	mm	1920
干重 Dry weight	kg	3120

## 环境条件 AMBIENT CONDITIONS

环境温度 Ambient Temperature	℃	≤40
相对湿度 Ambient Humidity	%	≤60
海拔高度 Altitude	m	≤1000

## 执行标准 APPLICABLE STANDARDS

ISO8528 ISO3046 IEC60034 IEC34  
BS5000PT99 BS5514 GB2820 GB755

## 柴油发电机组标准配置 STANDARD SUPPLY SCOPE

- 柴油发电机组，由玉柴柴油发动机、同步无刷交流发电机、40℃环境温度散热水箱、机组控制屏（科迈智能型控制器、及充电机、钢结构底座及内置减震器组装而成  
Diesel engine generator, assembled with YUCHAI diesel engine, Brushless AC alternator, 40℃ radiator, ComAp control module, battery charger and Steel common base and isolators
- 机组输出柜（三极断路器） Power output circuit breaker, 3 pole
- 电池组及连接线 Float charger and batteries
- 工业型消声器，排烟弯头，波纹管及配套法兰 Industrial silencer and accessories
- 随机专用工具 Routine maintenance tools
- 随机资料 A full set of operation and maintenance manuals and control schematics  
塑膜包装 Plastic film packing

## 备注 REMARKS

- 机组过载能力，每连续运行 12 小时中允许累计 1 小时超载不大于 10%。  
Overload capacity: 10% is available for 1 hour every 12 hours
- 每台机组都通过负载 0%、25%、50%、75%、100% 以及静态、动态各项响应能力的测试，所有保护装置和控制系统在出厂之前都经过严格检测合格。  
Performance load test 0%, 25%, 50%, 75% up to 100% and all protection and control functions conducted for each generator set.